



**EAGLE**

# NS 100 Self-Priming Pump

NS pump is a single stage, single suction and self-priming in type, suitable for transferring clean water, or any liquid with properties similar to that of water. This pump can be used in water supply and drainage in industry, agriculture, vegetable fields, gardens insect-elimination irrigation as well as supply and drainage of sewage in cities.

NS self-priming pump is known for its simple construction, easy operation and long usage life. There is no need for bottom valve. During its initial operation, priming water should be filled into the pump and several minutes after starting it, water will be discharge. There is no need for additional priming afterwards if the pump is not removed.



Speed / rpm	Capacity		Total head (m)	Driving power at shaft (kw)	Efficiency (%)	Max suction lift (m)	Diameter		Weight (kg)	Overall Dimensions LxWxH (mm)
	m <sup>3</sup> /h	l/s					suction	discharge		
1500	32.4	9	12.2	2.11	51	7	4" (Ø100)	4" (Ø100)	48.2	425 x 280 x 431
	54	15	10.2	2.63	57	6.5				
	75.6	21	7.2	2.96	50	5				
1800	39.6	11	17.5	3.7	51	7	"	"	"	"
	64.8	18	14.8	4.58	57	6.5				
	86.4	24	11.2	5.27	50	5				
2000	46.8	13	21.4	5.34	51	7	"	"	"	"
	75.6	21	17.6	6.35	57	6.5				
	97.2	27	13.6	7.2	50	5				
2200	54	15	25.6	7.38	51	7	"	"	"	"
	79.2	22	22	8.32	57	6.5				
	108	30	16.2	9.52	50	5				



**SUPERCAST FOUNDRY™** and Machinery Corporation

P. Gregorio St., Lingunan, Valenzuela, Metro Manila, Philippines - Zip 1446

Phone # (02) 443-4536 to 38 and 294-0206 to 08

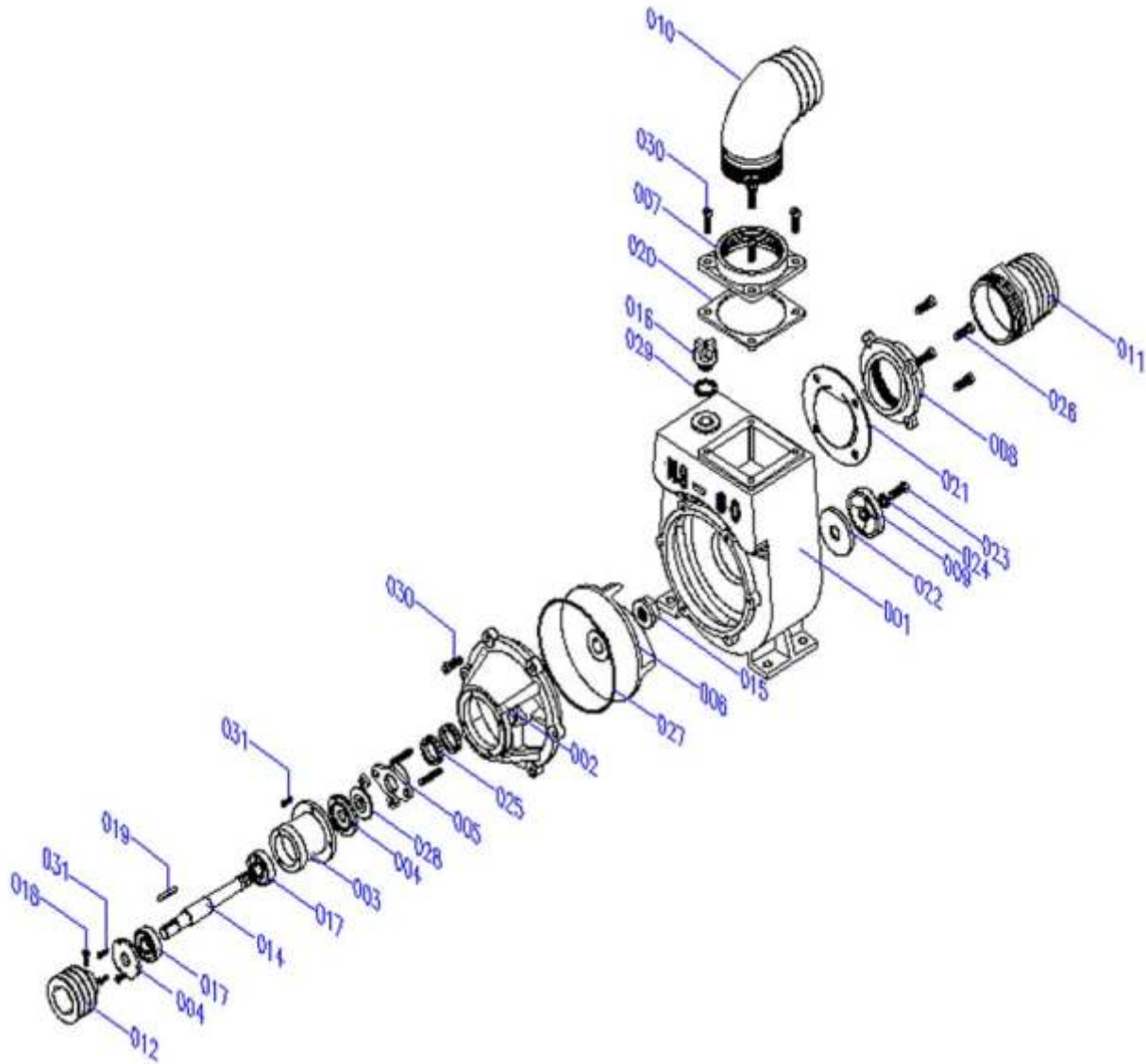
FAX # 443-4526

www.supercast.com.ph • inquiry@supercast.com.ph

# NS 100 Self-Priming Pump



**EAGLE**



**SUPERCAST FOUNDRY** and Machinery Corporation

P. Gregorio St., Lingunan, Valenzuela, Metro Manila, Philippines - Zip 1446

Phone # (02) 443-4536 to 38 and 294-0206 to 08

FAX # 443-4526

[www.supercast.com.ph](http://www.supercast.com.ph) • [inquiry@supercast.com.ph](mailto:inquiry@supercast.com.ph)